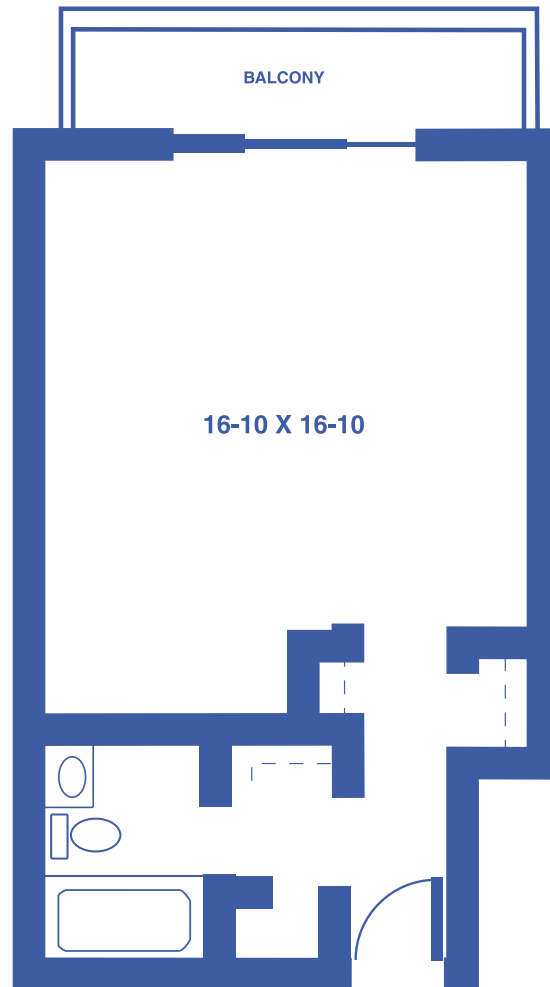


# TOWER APARTMENTS: THE BIRCH

## STUDIO / 405 SQUARE FEET

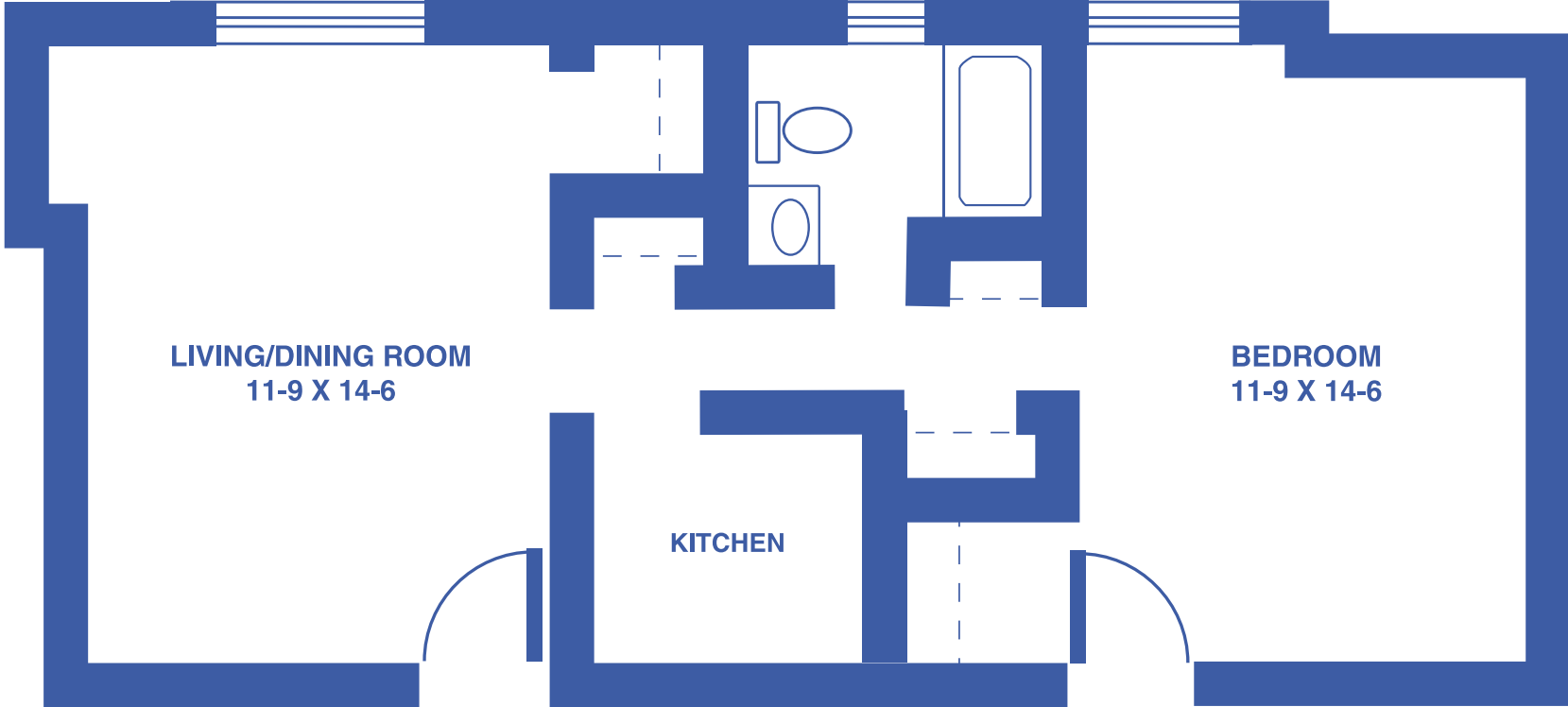


*Floor plans may vary slightly and are not to scale.*



# TOWER APARTMENTS: THE ALDER

ONE-BEDROOM / 550 SQUARE FEET

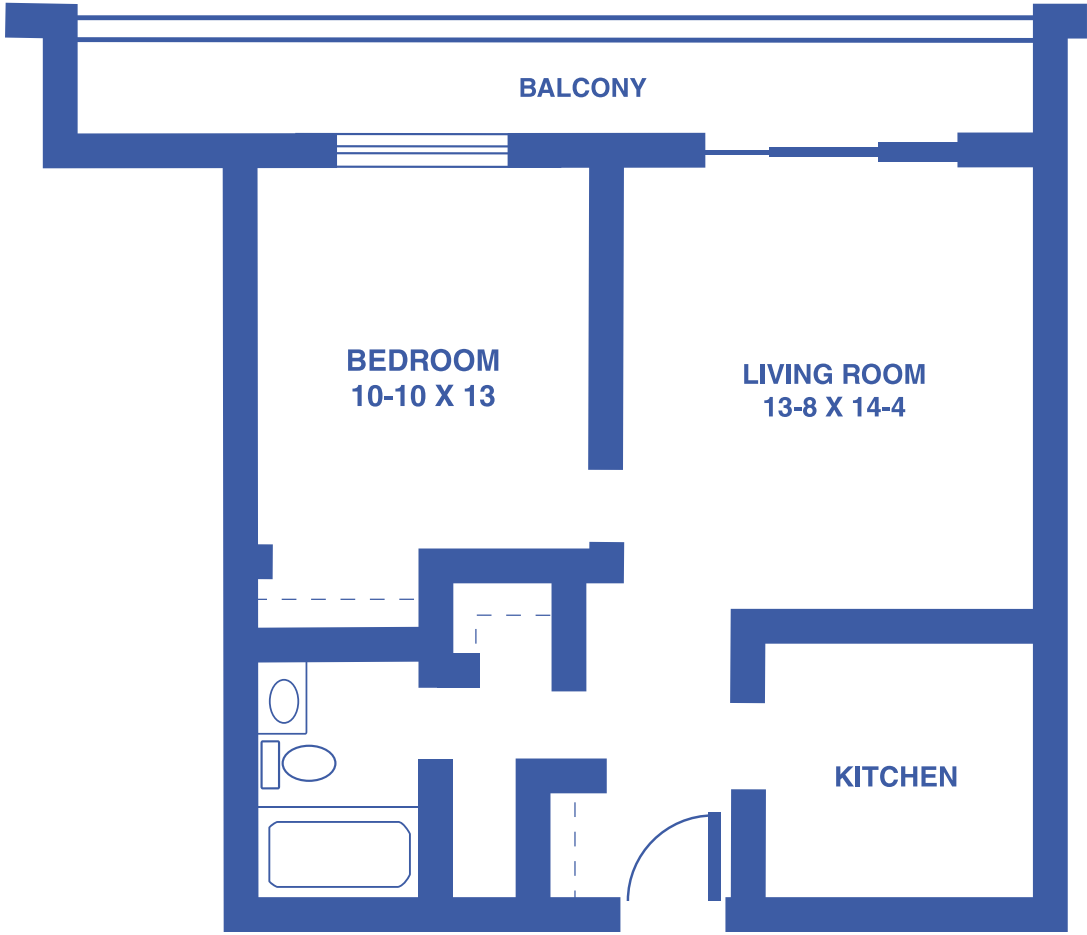


Floor plans may vary slightly and are not to scale.



# TOWER APARTMENTS: THE WILLOW

ONE-BEDROOM DELUXE / 550 SQUARE FEET

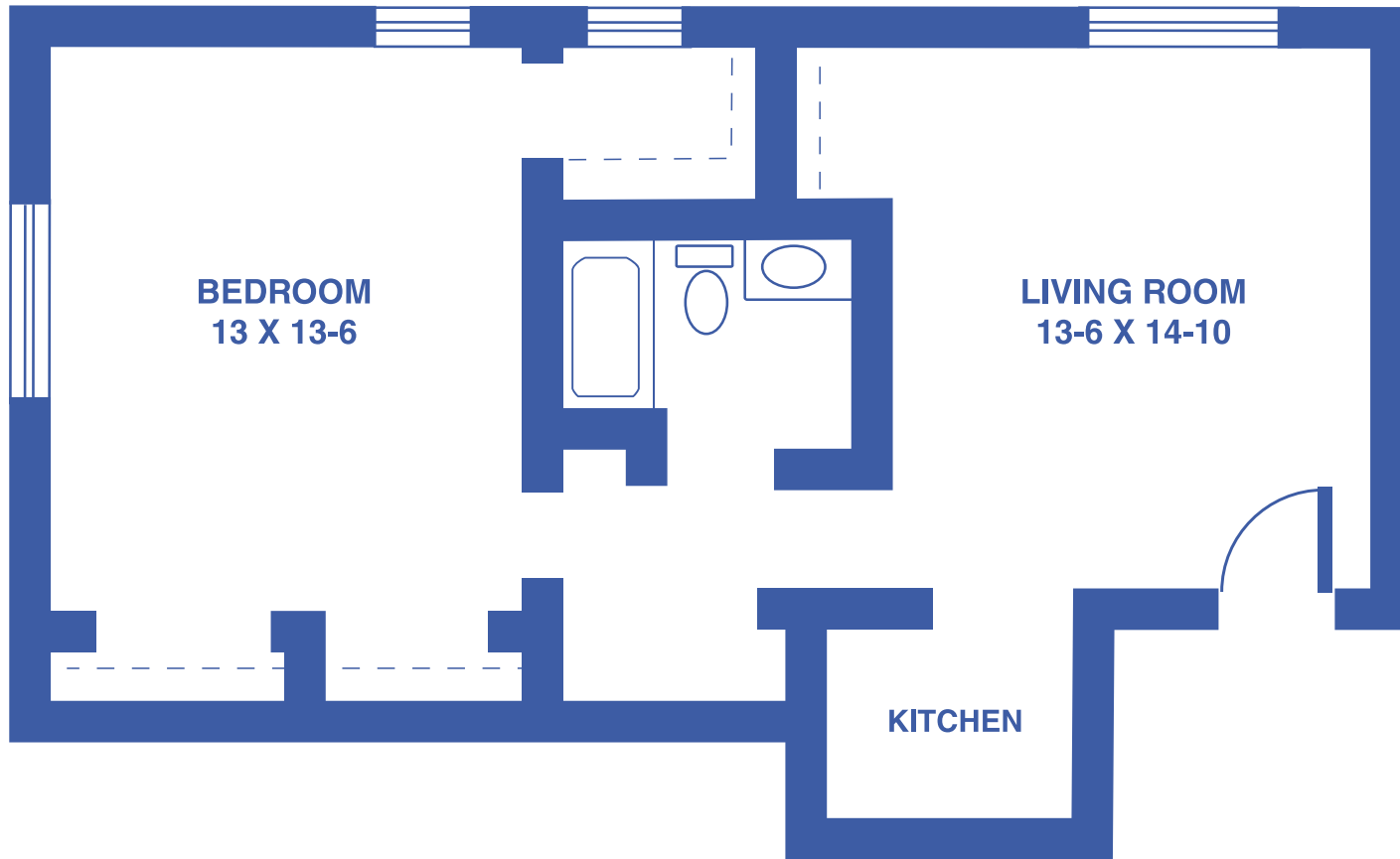


*Floor plans may vary slightly and are not to scale.*



# TOWER APARTMENTS: THE ELM

ONE-BEDROOM DELUXE / 710 SQUARE FEET



*Floor plans may vary slightly and are not to scale.*



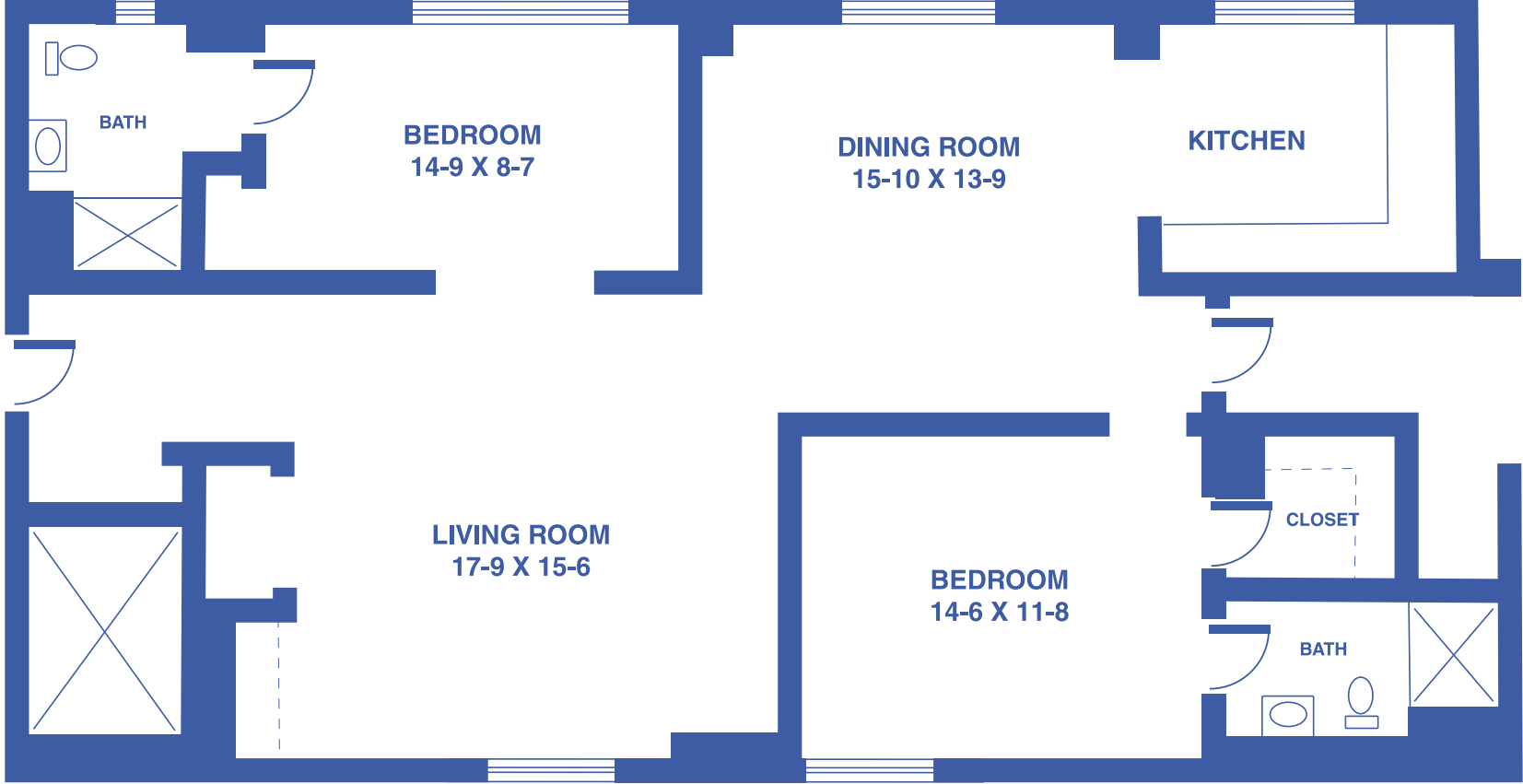
4712 SW 6TH AVE, TOPEKA, KS • [WWW.TOPEKAPRESBYTERIANMANOR.ORG](http://WWW.TOPEKAPRESBYTERIANMANOR.ORG)



**TOPEKA**  
Presbyterian Manor®

# TOWER APARTMENTS: THE MAPLE

TWO-BEDROOM GRAND / 1,130 SQUARE FEET

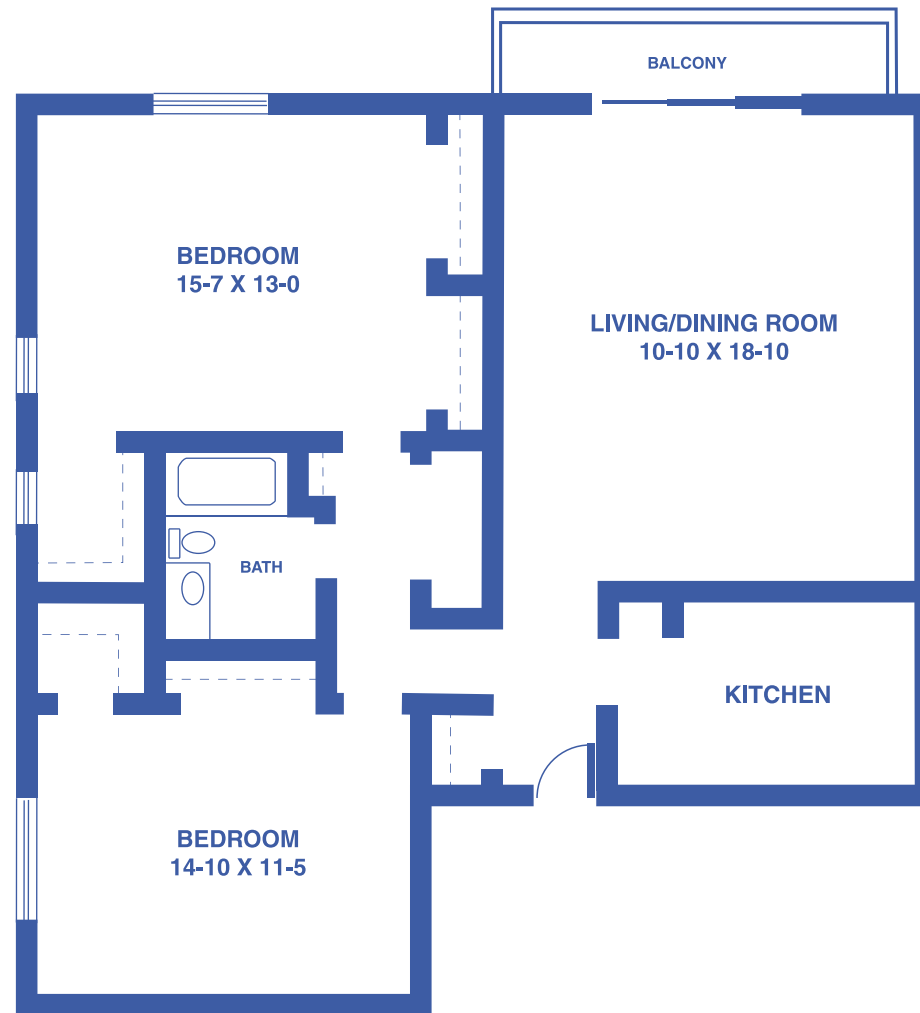


Floor plans may vary slightly and are not to scale.



# TOWER APARTMENTS: THE JUNIPER

## TWO-BEDROOM GRAND / 1,200 SQUARE FEET



*Floor plans may vary slightly and are not to scale.*



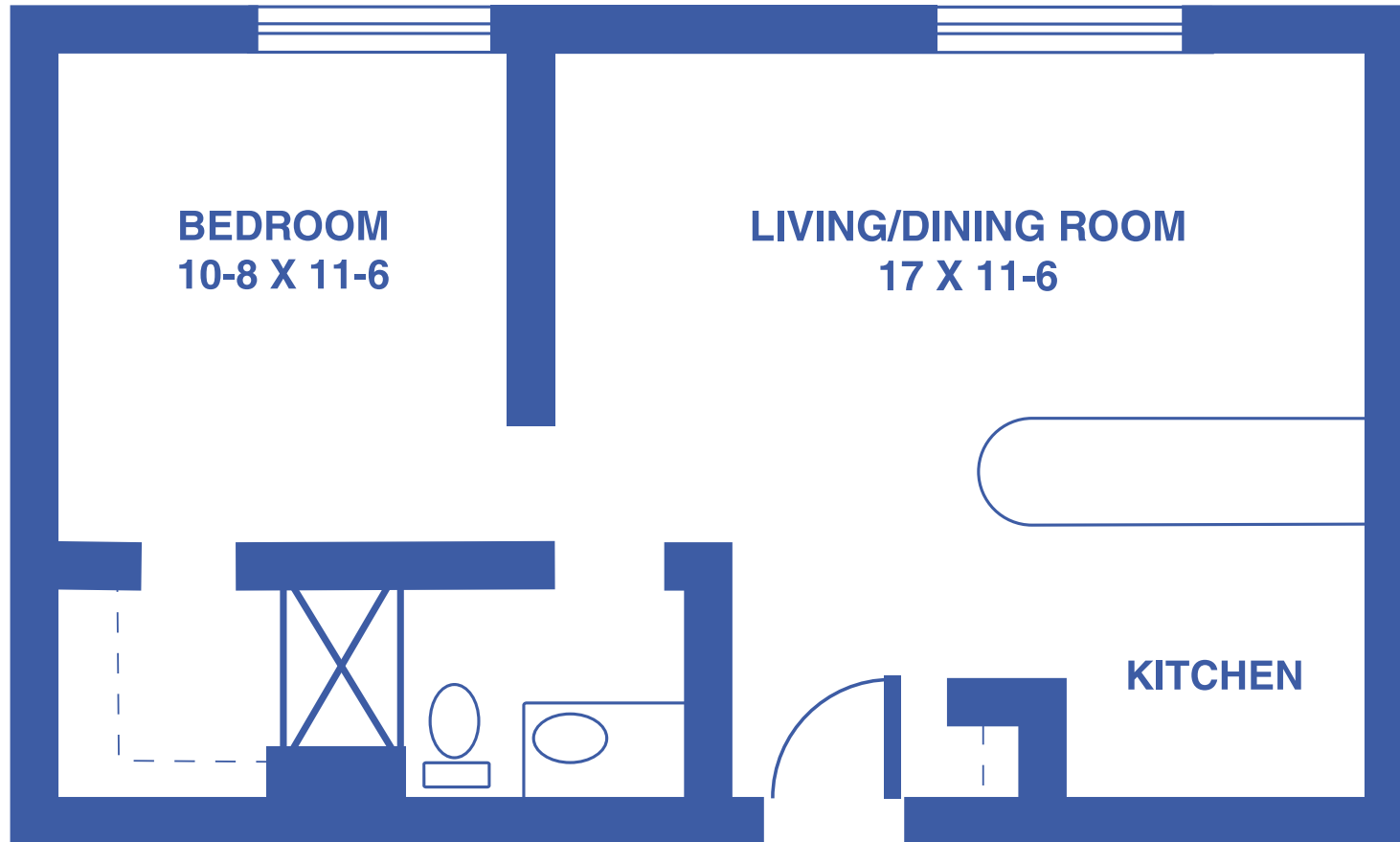
4712 SW 6TH AVE, TOPEKA, KS • [WWW.TOPEKAPRESBYTERIANMANOR.ORG](http://WWW.TOPEKAPRESBYTERIANMANOR.ORG)



**TOPEKA**  
Presbyterian Manor®

# GARDEN APARTMENTS: THE ASTER

ONE-BEDROOM / 470 SQUARE FEET



Floor plans may vary slightly and are not to scale.



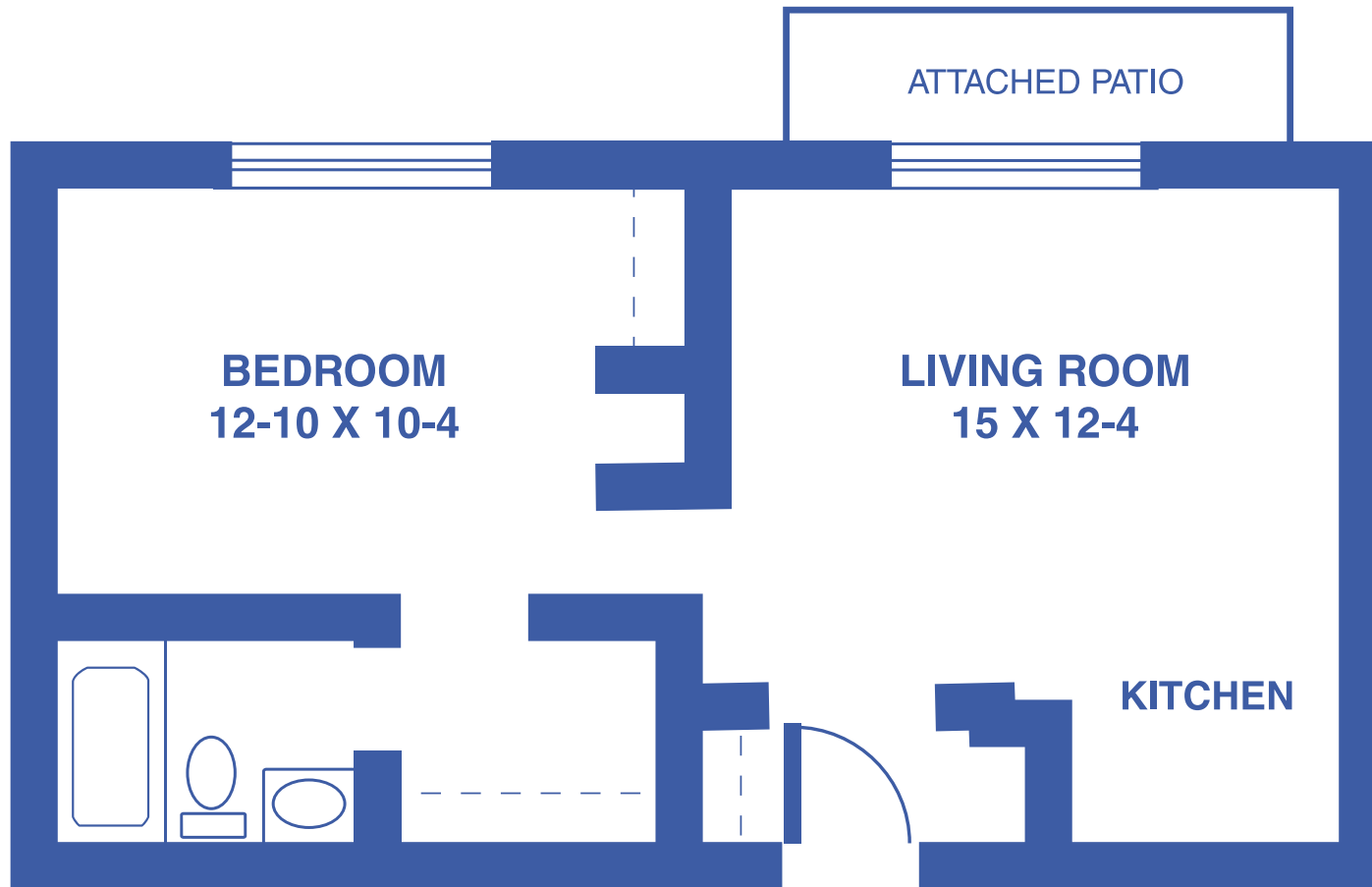
4712 SW 6TH AVE, TOPEKA, KS • [WWW.TOPEKAPRESBYTERIANMANOR.ORG](http://WWW.TOPEKAPRESBYTERIANMANOR.ORG)



**TOPEKA**  
Presbyterian Manor®

# GARDEN APARTMENTS: THE IRIS

ONE-BEDROOM DELUXE / 524 SQUARE FEET



*Floor plans may vary slightly and are not to scale.*



4712 SW 6TH AVE, TOPEKA, KS • [WWW.TOPEKAPRESBYTERIANMANOR.ORG](http://WWW.TOPEKAPRESBYTERIANMANOR.ORG)



**TOPEKA**  
Presbyterian Manor®



# GARDEN APARTMENTS: THE LILY

ONE-BEDROOM DELUXE / 608 SQUARE FEET

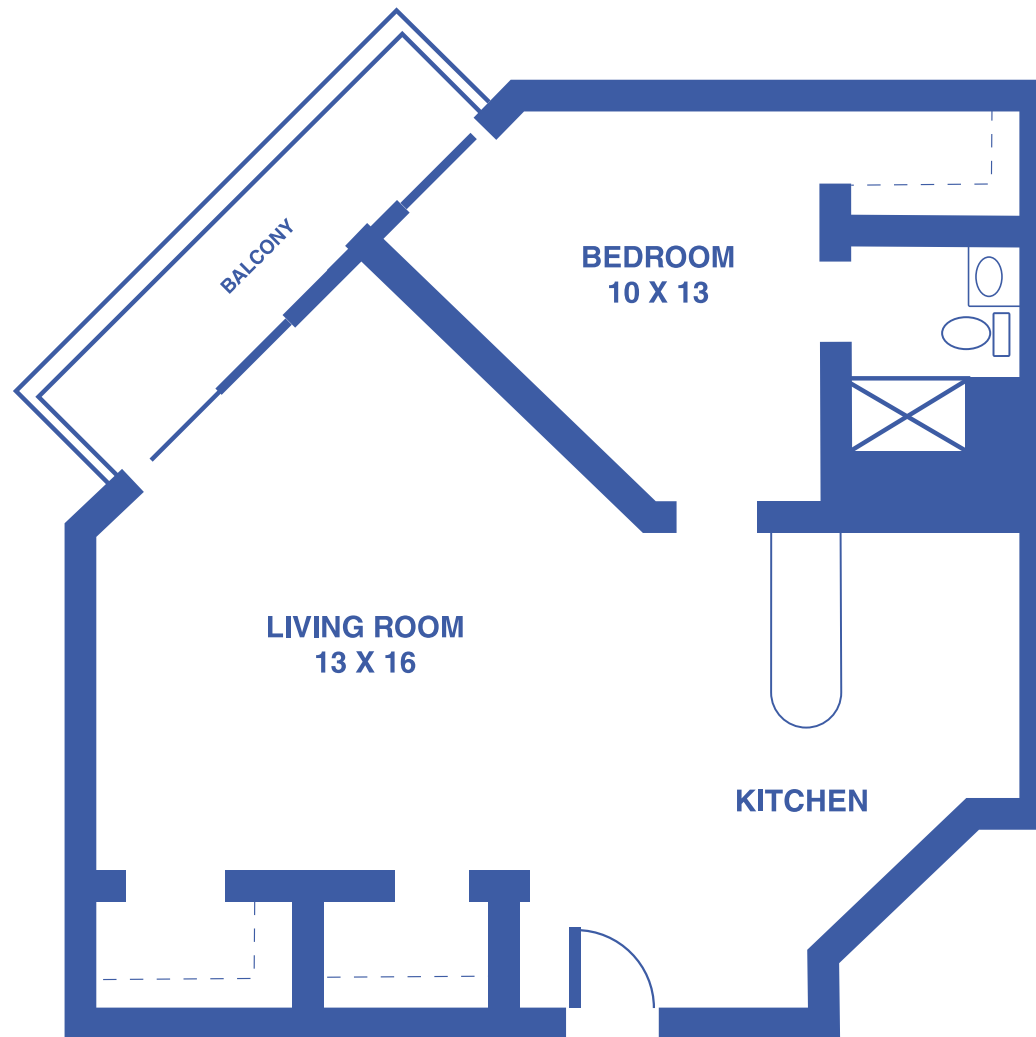


*Floor plans may vary slightly and are not to scale.*



# GARDEN APARTMENTS: THE MAGNOLIA

## ONE-BEDROOM DELUXE / 775 SQUARE FEET



*Floor plans may vary slightly and are not to scale.*



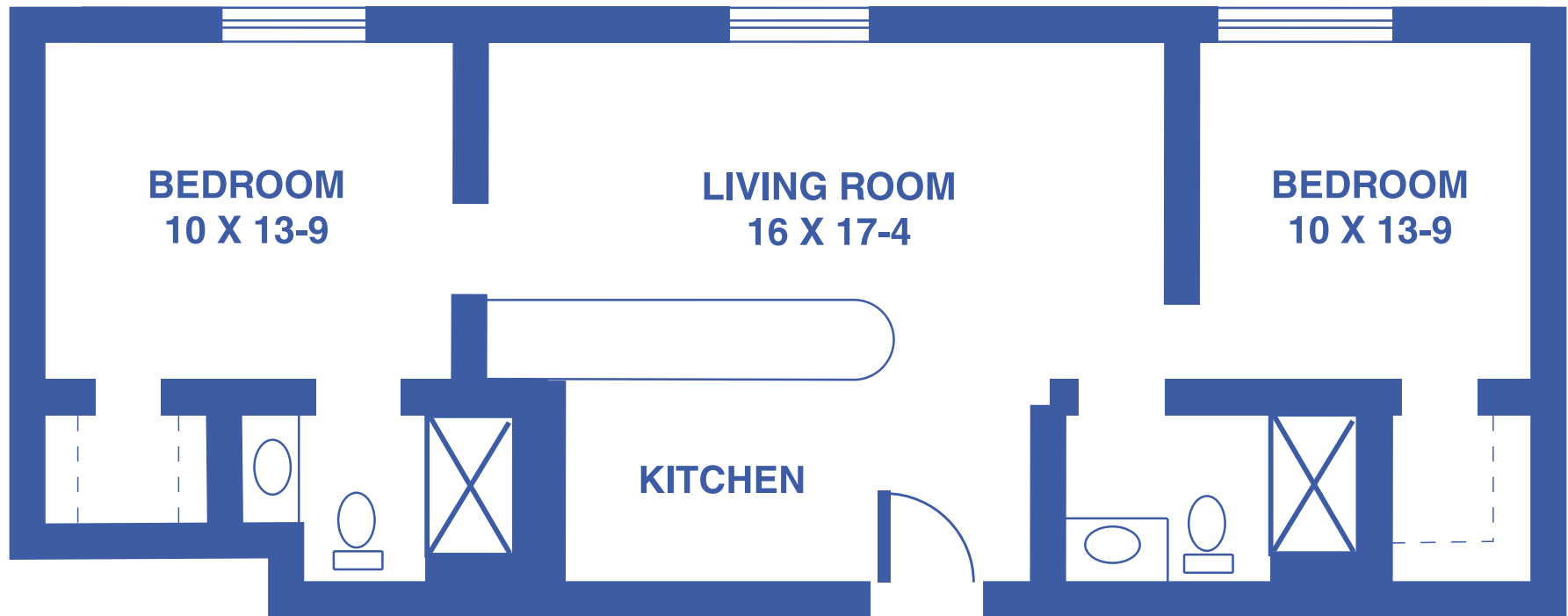
4712 SW 6TH AVE, TOPEKA, KS • [WWW.TOPEKAPRESBYTERIANMANOR.ORG](http://WWW.TOPEKAPRESBYTERIANMANOR.ORG)



**TOPEKA**  
Presbyterian Manor®

# GARDEN APARTMENTS: THE LAVENDER

TWO-BEDROOM / 695 SQUARE FEET



Floor plans may vary slightly and are not to scale.



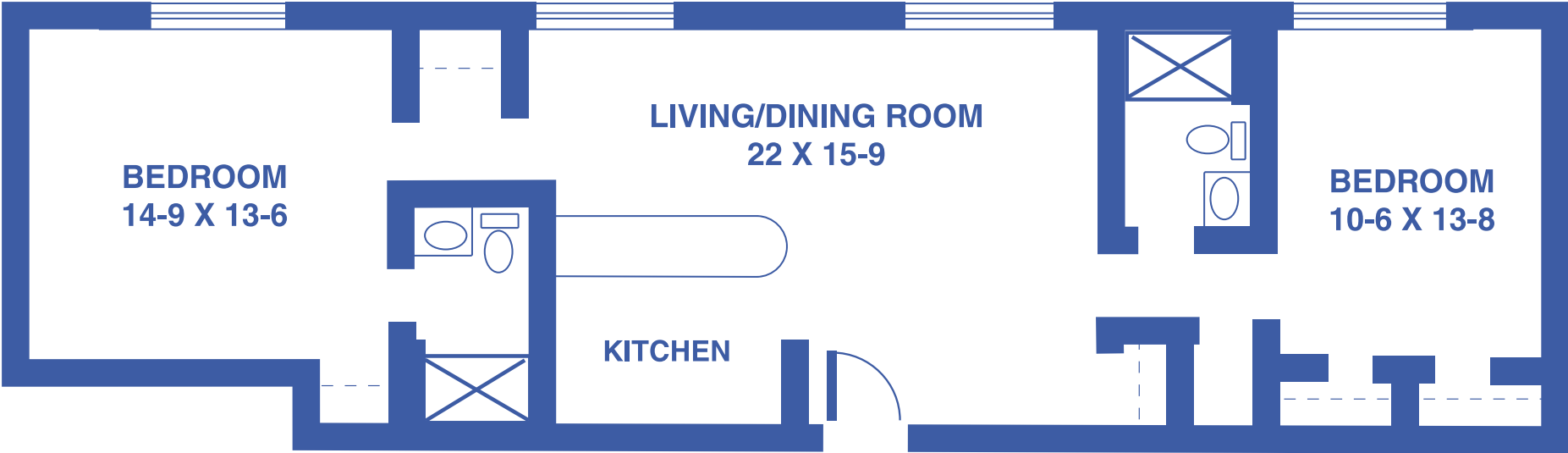
4712 SW 6TH AVE, TOPEKA, KS • [WWW.TOPEKAPRESBYTERIANMANOR.ORG](http://WWW.TOPEKAPRESBYTERIANMANOR.ORG)



**TOPEKA**  
Presbyterian Manor®

# GARDEN APARTMENTS: THE POPPY

TWO-BEDROOM DELUXE / 830 SQUARE FEET



*Floor plans may vary slightly and are not to scale.*



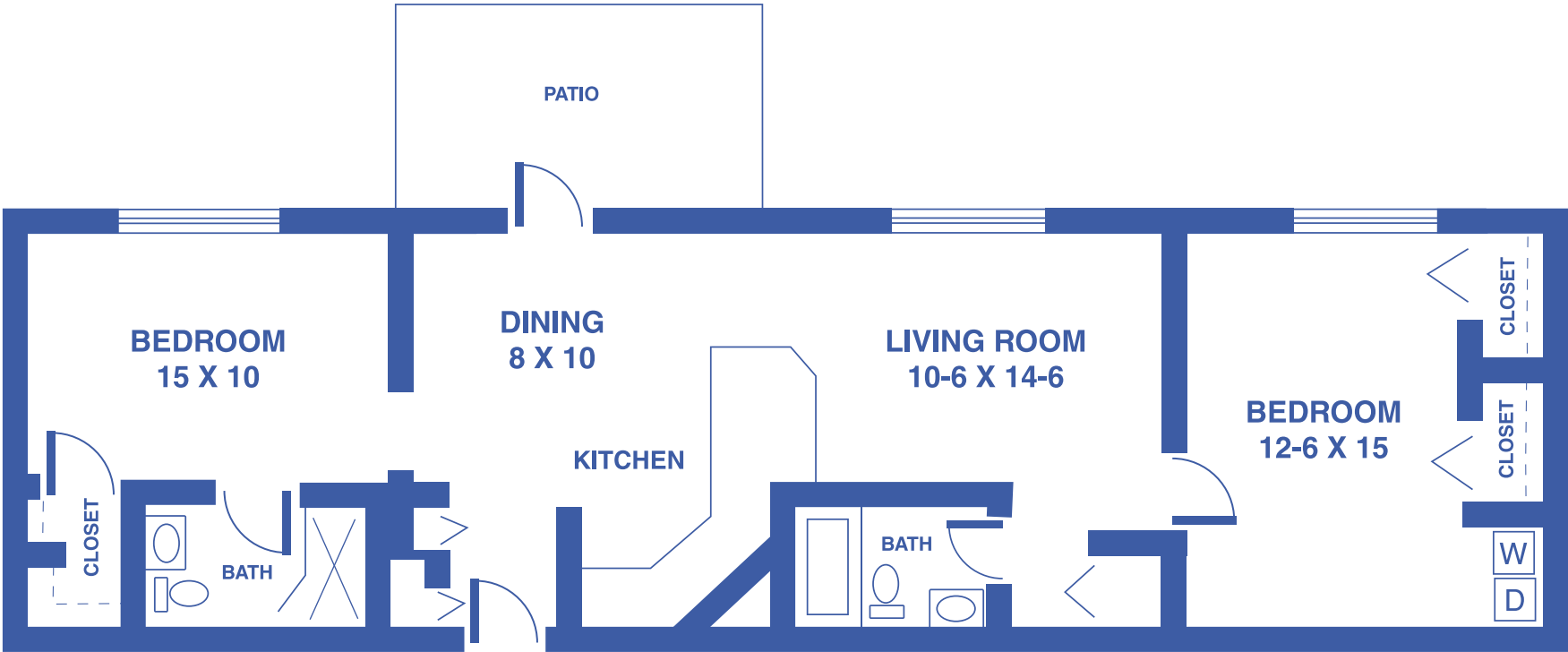
4712 SW 6TH AVE, TOPEKA, KS • [WWW.TOPEKAPRESBYTERIANMANOR.ORG](http://WWW.TOPEKAPRESBYTERIANMANOR.ORG)



**TOPEKA**  
Presbyterian Manor®

# GARDEN APARTMENTS: THE ORCHID

TWO-BEDROOM GRAND / 1,037 SQUARE FEET



Floor plans may vary slightly and are not to scale.



4712 SW 6TH AVE, TOPEKA, KS • [WWW.TOPEKAPRESBYTERIANMANOR.ORG](http://WWW.TOPEKAPRESBYTERIANMANOR.ORG)



**TOPEKA**

Presbyterian Manor®

# THE COTTAGES

TWO-BEDROOM DUPLEX / 1,306 SQUARE FEET



Floor plans may vary slightly and are not to scale.



4712 SW 6TH AVE, TOPEKA, KS • [WWW.TOPEKAPRESBYTERIANMANOR.ORG](http://WWW.TOPEKAPRESBYTERIANMANOR.ORG)



**TOPEKA**  
Presbyterian Manor®